

تاتريز

Tradition & Design

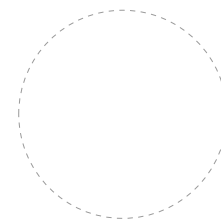
WEB: www.tatreezshop.com
EMAIL: info@tatreezshop.com
PHONE: +961 767 231 26

Congratulations on your purchase you have a unique product in your hands. Enjoy it!

Tatreez is a fusion of antique tradition and the most up-to-date designs, hand-made with care by Palestinian refugee women in Lebanon.



A project funded by the European Union



تاتريز

Tradition & Design

CATALOG
PRODUCTS



WHAT IS TATREEZ?

Tatreez is a brand of handcrafted products based on the recovery of the techniques and colors of traditional Palestinian embroidery. A combination of quality and timeless design, Tatreez ensures the longevity of its products beyond fads.

Tatreez maintains a secular tradition, which has been transmitted orally for generations despite Palestinian diaspora.

All our products are hand made by Palestinian women in the refugee camps of Ein el Helweh (Saida), Naher al Bared (Tripoli) and Rashedeje (Tyer), in Lebanon.

Tatreez speaks of the women's dignity and effort, their creativity, the fulfillment and pride of quality work, and the elegance of traditional embroidery.

Tradition / Design / Quality / Femininity / A celebration of color!

TATREEZ IS A PROJECT FROM WOMEN TO WOMEN...





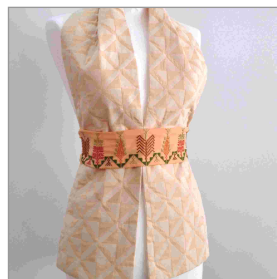
VEST + BELT
#REF: TOT 17/1

FABRIC: CRÊP
DIMENSIONS: Vest 75cm l.
Belt 7 x 50 cm, 110 cm Str.
PRICE: \$42



VEST + BELT
#REF: TOT 17/2

FABRIC: CRÊP or WOOL
DIMENSIONS: Vest 75cm l.
Belt 7 x 50 cm, 110 cm Str.
PRICE: \$42



VEST + BELT
#REF: TOT 17/2

FABRIC: CRÊP & TAPESTRY
DIMENSIONS: Vest 75cm l.
Belt 7 x 50 cm, 110 cm Str.
PRICE: \$42



- CUSHIONS. 04
- SHAWLS. 08
- SCARVES. 12
- SHOPPER BAGS. 14
- SHOULDER BAGS. 18
- CLUTCHES. 20
- POUCHES. 22
- ACCESSORIES. 24
- BELTS. 28



CUSHIONS



ELASTIC BELT
#REF: TOT 19.2

FABRIC: CRÊP & ELASTIC
DIMENSIONS: 6 x 70 cm
PRICE: \$25



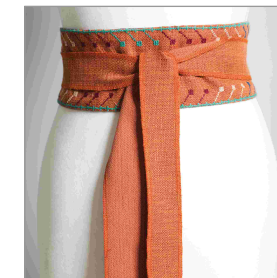
ELASTIC BELT
#REF: TOT 19.2

FABRIC: CRÊP & ELASTIC
DIMENSIONS: 8 x 80 cm
PRICE: \$25



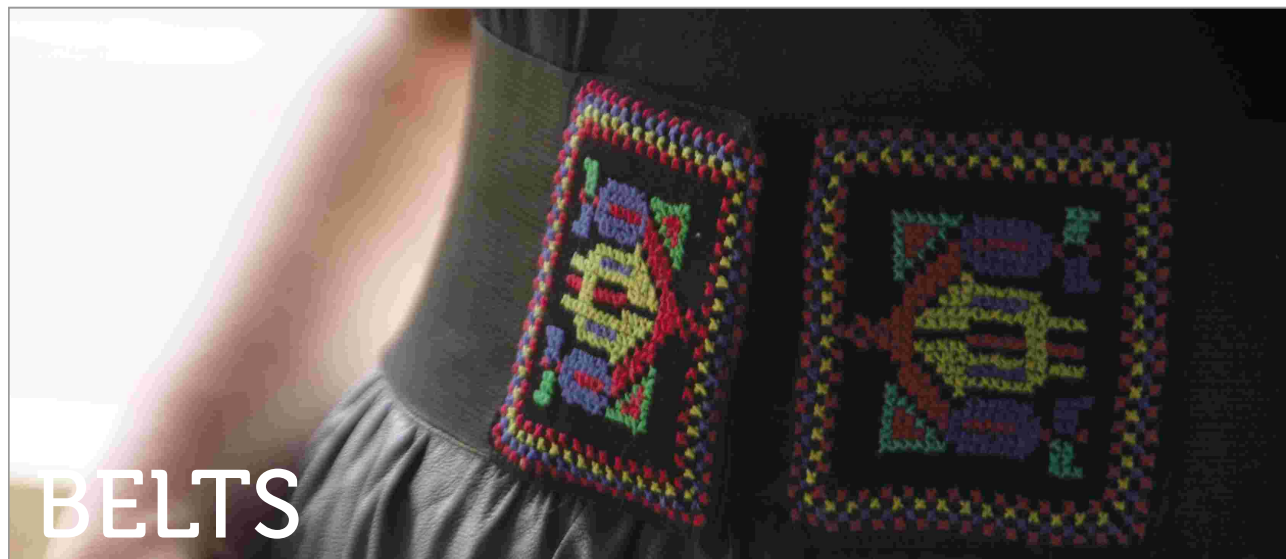
WRAP BELT
#REF: BAR 06

FABRIC: COTTON
DIMENSIONS: 9 x 75cm
170cm STRIPS
PRICE: \$30



WRAP BELT
#REF: BAR 06

FABRIC: COTTON
DIMENSIONS: 9 x 75cm
170cm STRIPS
PRICE: \$30



CUSHION BICOLOR BLUE
#REF: EIN 01

FABRIC: 100% COTTON
DIMENSIONS: 30 x 50 cm
PRICE: \$25



CUSHION BICOLOR RED
#REF: BAR 01

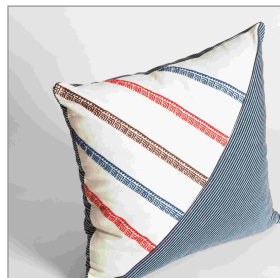
FABRIC: 100% COTTON
DIMENSIONS: 30 x 50 cm
PRICE: \$25



CUSHION CENTRAL RED
#REF: BAR 02

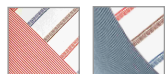
FABRIC: 100% COTTON
DIMENSIONS: 30 x 50 cm
PRICE: \$37





CUSHION STRIPES
#REF: EIN 02

FABRIC: 100% COTTON
DIMENSIONS: 45 x 45 cm
PRICE: \$35



CUSHION TATREEZ FRAME
#REF: EIN 03/1

FABRIC: 100% COTTON
DIMENSIONS: 45 x 45 cm
PRICE: \$35



CUSHION BLUE
AND BROWN STRIPES
#REF: EIN 03/2

FABRIC: 100% COTTON
DIMENSIONS: 45 x 45 cm
PRICE: \$40





SILK PENDANT
#REF: RAS 05

FABRIC: SILK
PRICE: \$12



BEADS NECKLACE
#REF: BAR 07/5

FABRIC: SILK & CRISTAL BEADS
PRICE: \$25



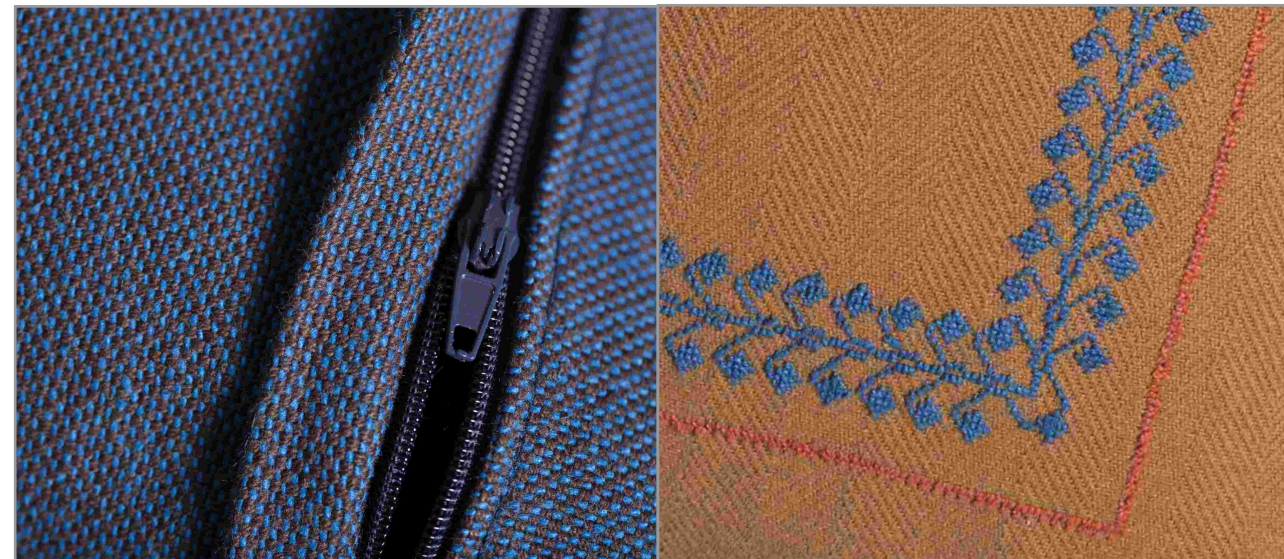
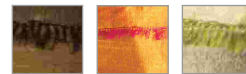
BRACELET
#REF: TOT 15

FABRIC: COTTON & SILK
PRICE: \$20



BUCKET
#REF: TOT 11

FABRIC: 100% SILK
DIMENSIONS: 30 x 30 cm
PRICE: \$30





SHAWLS



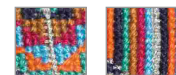
TWO SIDES
THREE TRIANGLES PENDANT
#REF: BAR 07/4

FABRIC: COTTON
PRICE: \$18



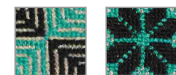
TWO SIDES
TRIANGLE PENDANT
#REF: BAR 07/1

FABRIC: COTTON
PRICE: \$12



TWO SIDES
SQUARE PENDANT
#REF: BAR 07/2

FABRIC: COTTON
PRICE: \$12



TWO SIDES
UNEVEN SQUARE PENDANT
#REF: BAR 07/3

FABRIC: COTTON
PRICE: \$12





ACCESSORIES



SHAWL
#REF: TOT 12.1 / 12.2

FABRIC: 100% WOOL
DIMENSIONS: 75 x 175 cm
PRICE: \$240



CLOSED SHAWL
#REF: TOT 14

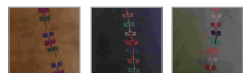
FABRIC: WOOL
DIMENSIONS: 40 x 150 cm
PRICE: \$50





CHAL TATREEZ ON SIDES
#REF: EIN 04/1

FABRIC: CHIFFON 100% SILK
DIMENSIONS: 150 x 190 cm
PRICE: \$65



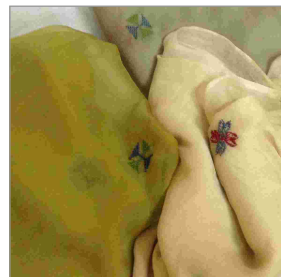
CHAL TATREEZ ON SIDES
#REF: EIN 04/1

FABRIC: CHIFFON 100% SILK
DIMENSIONS: 150 x 190 cm
PRICE: \$65



CHAL TATREEZ SPOTS
#REF: EIN 04/2

FABRIC: CHIFFON 100% SILK
DIMENSIONS: 150 x 190 cm
PRICE: \$65



BIG POACH
#REF: RAS 04

FABRIC: COTTON & LINEN
DIMENSIONS: 18 x 21cm
PRICE: \$25



COINS POACH
#REF: BAR 04

FABRIC: COTTON
DIMENSIONS: 13 x 11cm
PRICE: \$12



MEDIUM POACH
#REF: EIN 06/2

FABRIC: SILK / COTTON
DIMENSIONS: 15 x 20 cm
PRICE: \$18/ \$15



POACH
#REF: EIN 06/1

FABRIC: 100% COTTON
DIMENSIONS: 15 x 20 cm
PRICE: \$15



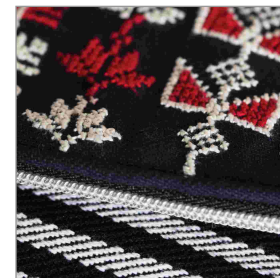


SCARVES



BLACK STRIPPED POUCH
#REF: RAS 03/1

FABRIC: 100% COTTON
DIMENSIONS: 26 x 33 cm
PRICE: \$45



DENIM STRIPPED POUCH
#REF: RAS 03/2

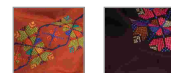
FABRIC: 100% COTTON
DIMENSIONS: 26 x 33 cm
PRICE: \$45





TWO POSITIONS SCARF
#REF: TOT 13.2

FABRIC: WOOL & COTTON
DIMENSIONS: 15 x 100 cm
PRICE: \$30



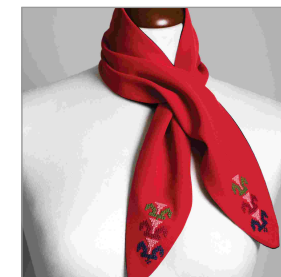
TWO POSITIONS SCARF
#REF: TOT 13.1

FABRIC: WOOL & COTTON
DIMENSIONS: 15 x 100 cm
PRICE: \$30



NECK SCARF
#REF: TOT 12.1

FABRIC: CRÊP & COTTON
DIMENSIONS: 16 x 70 cm
PRICE: \$25



NECK SCARF
#REF: TOT 12.2

FABRIC: CRÊP & COTTON
DIMENSIONS: 16 x 70 cm
PRICE: \$25

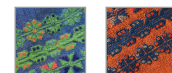


SHOPPER BAGS



SHOULDER BAG BLUE & GREEN
#REF: EIN 07

FABRIC: TAPESTRY
DIMENSIONS: 40 x 25cm
PRICE: \$40



SHOULDER BAG PETROLEUM
#REF: RAS 01

FABRIC: COTTON
DIMENSIONS: 34 x 38 cm
PRICE: \$50





SHOULDER BAGS



SHOPPER BAG STRIPED
#REF: EIN 08

FABRIC: TAPESTRY COTTON
DIMENSIONS: 40 x 40cm
PRICE: \$50



SHOPPER BAG STRIPED
#REF: RAS 02

FABRIC: TAPESTRY COTTON
DIMENSIONS: 40 x 40cm
PRICE: \$50



SHOPPER BAG STRIPED
#REF: TOT 09

FABRIC: 100% COTTON
DIMENSIONS: 40 x 40cm
PRICE: \$50



BLUE DENIM BAG
#REF: BAR 03

FABRIC: 100% COTTON
DIMENSIONS: 38 x 50cm
PRICE: \$35



EMBROIDERED
HANDLES BAG
#REF: EIN 05

FABRIC: TAPESTRY &
COTTON
DIMENSIONS: 30 x 48 cm
PRICE: \$45



EMBROIDERED
HANDLES BAG
#REF: BAR 05

FABRIC: TAPESTRY &
COTTON
DIMENSIONS: 30 x 48 cm
PRICE: \$45



CANVAS SHOPPER
3 HANDLES
#REF: TOT 07

FABRIC: 100% COTTON
DIMENSIONS: 40 x 43 cm
PRICE: \$50



CANVAS JEANS SHOPPER
#REF: TOT 08

FABRIC: 100% COTTON
DIMENSIONS: 40 x 45 cm
PRICE: \$45

